

# Massachusetts DOT

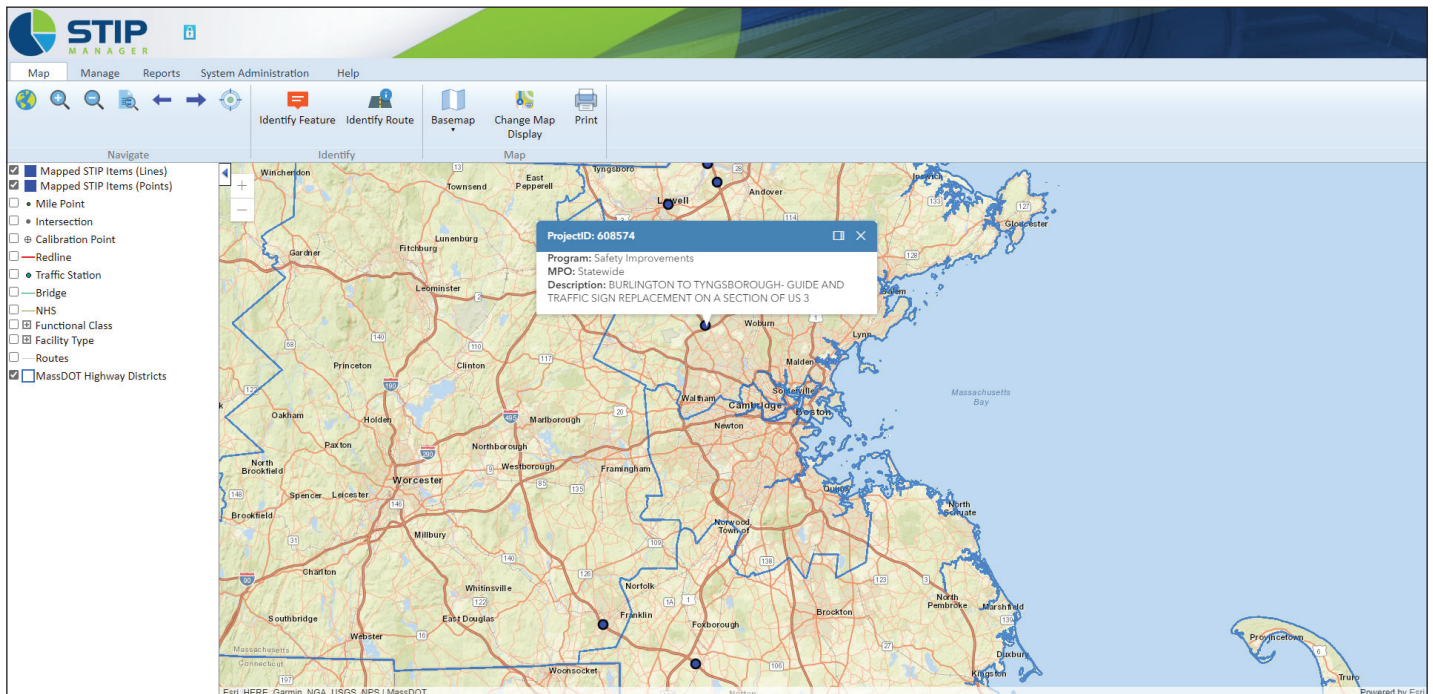
## STIP Manager Implementation

Massachusetts DOT (MassDOT) implemented the PMG STIP Manager software in 2019. STIP Manager was chosen by MassDOT due to its comprehensive approach to managing the STIP and TIP Processes. The web-based user-friendly tool provides integration with Esri's GIS platform, spatial analysis for project funding eligibility determinations, and complete management of Amendments and Adjustments to ensure actions are processed through MassDOT's workflow. The project included business analysis, customization, implementation services, and integration with existing systems: PINFO for project information and Massachusetts geoDOT/ArcGIS for authentication and GIS information.

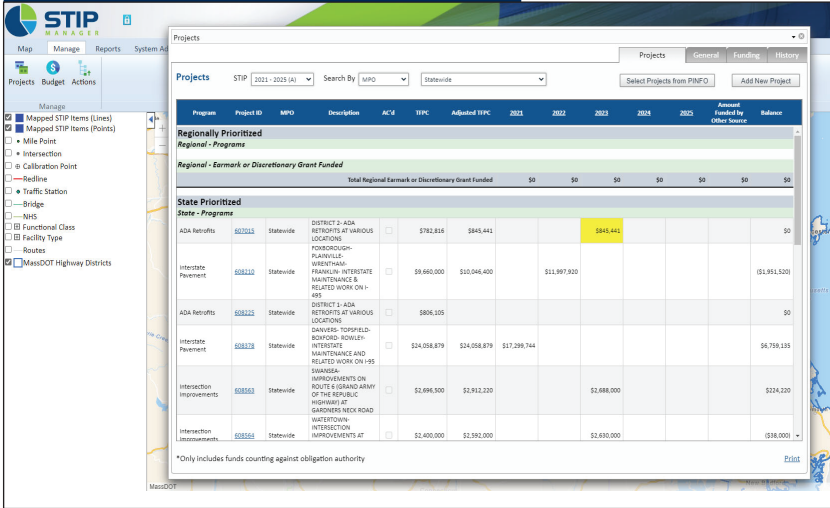
## About MassDOT

FFY 2020-2024 STIP invests nearly \$8.4 billion in roadways, bridges, bike & ped facilities and public transportation including:

- \$1.5 billion towards reliability of the existing highway system through bridge & pavement programs
- \$1.2 billion across the 13 Metropolitan Planning Organizations (MPOs)
- \$178.7 million in Highway Safety Improvements



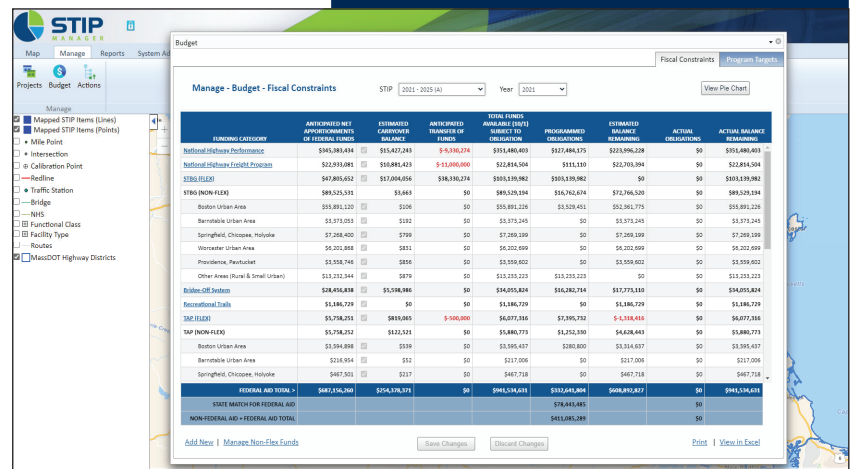
## STIP Manager Projects



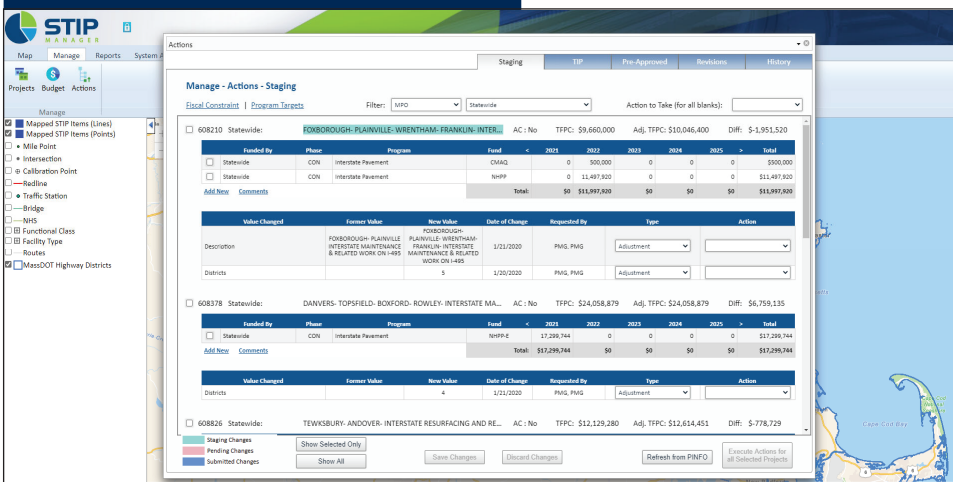
STIP Manager is integrated with the MassDOT PINFO system for project retrieval. New projects can also be entered directly in STIP Manager.

## STIP Manager Budgets

STIP Manager provides the ability to maintain Fund Source and Program budgets to ensure fiscal constraint thresholds are continually being met.



## STIP Manager Actions



STIP Manager includes automatic submittal of STIP modifications to Federal Agencies for approval.